



# MONTHLY MEMBERSHIP PROGRESS REPORT

District 27 C1

Results as of: 10/31/2017

GMT: MICHAEL MOLEND

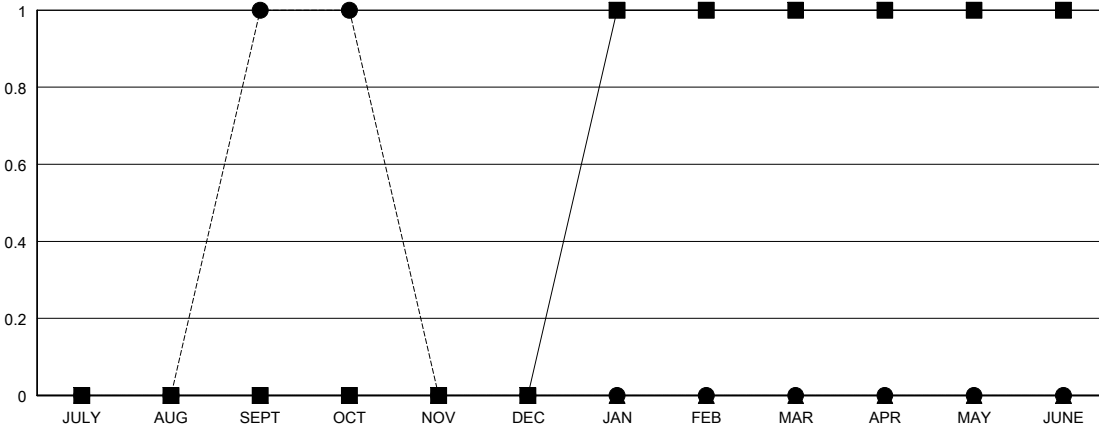
LOCATION WISCONSIN

GMT CA

| Clubs                 |               |           |               |
|-----------------------|---------------|-----------|---------------|
| RESULTS FOR 2017-2018 |               |           |               |
| QUARTER               | NEW CLUB GOAL | NEW CLUBS | DROPPED CLUBS |
| JULY/AUG/SEPT         | 0             | 1         | 0             |
| OCT/NOV/DEC           | 0             | 0         | 0             |
| JAN/FEB/MAR           | 1             | 0         | 0             |
| APR/MAY/JUNE          | 0             | 0         | 0             |

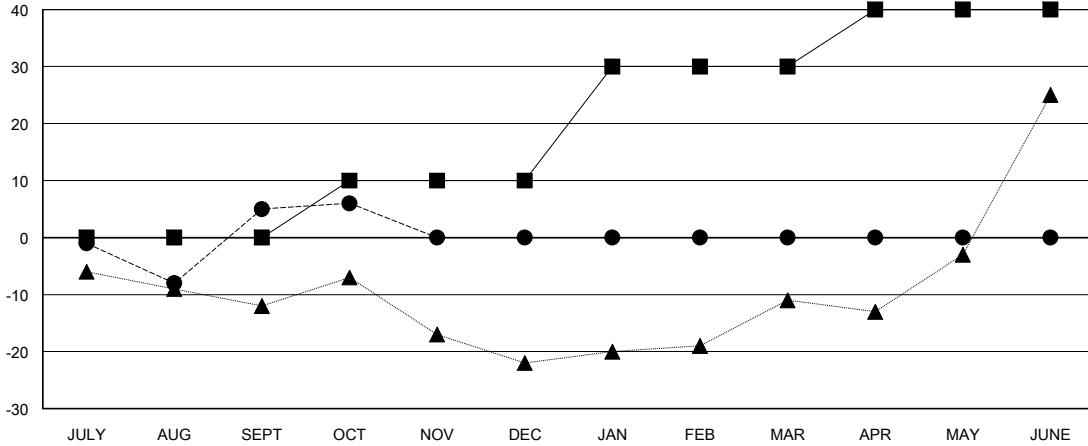
| Members               |                        |                      |  |
|-----------------------|------------------------|----------------------|--|
| RESULTS FOR 2017-2018 |                        |                      |  |
| QUARTER               | MEMBER GROWTH NET GOAL | MEMBER GROWTH ACTUAL | DROPPED MEMBERS ACTUAL (including transfers) |
| JULY/AUG/SEPT         | 0                      | 52                   | 43   |
| OCT/NOV/DEC           | 10                     | 9                    | 8  |
| JAN/FEB/MAR           | 20                     | 0                    | 0  |
| APR/MAY/JUNE          | 10                     | 0                    | 0  |

GOALS AND ACTUAL NEW CLUBS CUMULATIVE



- - CURRENT YEAR GOALS FOR NEW CLUBS
- - CURRENT YEAR ACTUAL NEW CLUBS
- ▲ - LAST YEAR ACTUAL NEW CLUBS

GOALS AND ACTUAL MEMBERS CUMULATIVE



- - MEMBER GROWTH NET GOAL
- - MEMBER GROWTH ACTUAL
- ▲ - LAST YEAR MEMBERSHIP ACTUAL

|                        |   |  |
|------------------------|---|--|
| DROPPED CLUBS: 0       | 19 CLUBS OF 56 ADDED 1 OR MORE NEW MEMBERS                | <u>GENDER DISTRIBUTION</u>             |
|                        |   | MALE 1,190 (74.38%)                    |
|                        |   | FEMALE 410 (25.62%)                    |
|                        |   | Women Percentage Fiscal Year Goal: 25% |
| <u>DROPPED MEMBERS</u> | <a href="#">CLICK HERE FOR CUMULATIVE MEMBERSHIP DATA</a> | TOTAL FAMILY UNIT MEMBERS 363          |
| DECEASED 7             |   | FAMILY MEMBERS PAYING HALF DUES 183    |
| CLUB CANCELLED 0       |   |  |
| OTHER 44               |   |  |
| TOTAL 51               |   |  |